

# Reptan Ilm

**BRINGING  
JOINT HEALTH  
A STEP CLOSER**



A world of health benefits

**Rousselot**  
Health & Nutrition

**DARLING**  
INGREDIENTS



Peptan® IIm, hydrolyzed collagen type II matrix, delivering multiple joint health benefits.

From weekend warriors to the young at heart, consumers increasingly understand the importance of healthy joints to their mobility and are taking preventative measures such as dietary supplementation. Prevention, key driver in supplement consumption.

**49%**

of Global\* supplement users do so to tackle Bone & Joint Health Concerns.<sup>1</sup>

**83%**

of Global\* supplement users consider supplements as way to enhance health/performance.<sup>1</sup>

**23%**

of 55+years US supplement users claim Joint Health as the top reason to take supplements.<sup>2</sup>

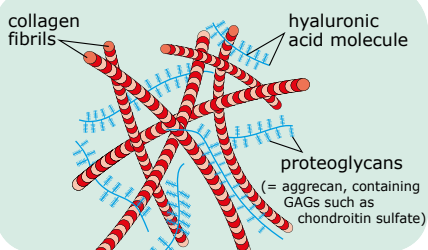
**17%**

of US supplement users do so to tackle mainly Joint Health.



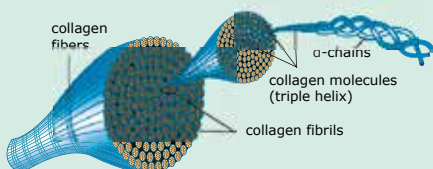
## What is joint cartilage?

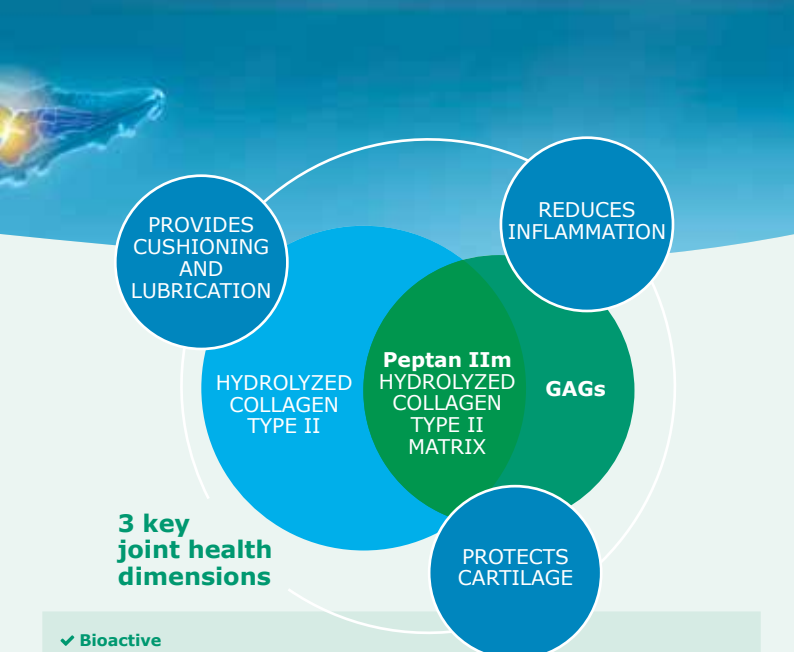
Cartilage is an extremely strong, resistant and flexible tissue.



## What is Type II collagen?

Type II collagen originates from cartilage and is found in a natural matrix together with glycosaminoglycans (GAGs): chondroitin sulfate and hyaluronic acid.





- ✓ Bioactive
- ✓ Made in Europe
- ✓ Highest quality standards

Peptan IIIm is a hydrolyzed collagen type II matrix, a unique and innovative joint health ingredient, that contributes to 3 key joint health dimensions.



**Protects cartilage**

Peptan IIIm helps to keep the cartilage matrix of collagen type II and aggrecan intact.



**Provides cushioning and lubrication**

Peptan IIIm stimulates joint cells to produce lubricating matrix, cushioning the joint environment for easy movement.



**Reduces inflammation**

Signaling peptides act as messengers to reduce inflammation.



**SETTING A NEW JOINT HEALTH STANDARD**



**Single ingredient** with **triple** benefits of the full matrix.



**Dosage level** (1-3g/day) suitable for tablets and capsules.



**Highly soluble** suitable for a broad range of liquid applications.



**Application versatility** one product, multiple applications.



**Safe non-drug** of natural origin.



**Fast action** within the joints.



**Absorbed** by the body and working on location.

# BENEFIT FROM OUR (CO-)INNOVATION, COMMITMENT & WORLD-CLASS EXPERTISE

With Peptan<sup>®</sup>, you will have a reliable, closely connected partner.



Our global leadership in collagen peptides, combined with our worldwide presence and customer-centric culture, enables us to be a closely connected, reliable partner to you as a manufacturer. We can help you with virtually any product requirement or innovation you have in mind.

#### References

- <sup>1</sup> 2019 Rousselot Health & Nutrition Survey – considering: USA, Spain, Brazil, France, UK, Japan N=2300
- <sup>2</sup> 2018 CRN Consumer Survey on Dietary supplements [www.crnusa.org/CRNConsumer](http://www.crnusa.org/CRNConsumer)
- <sup>3</sup> 2016 CRN Consumer Survey on Dietary supplements <https://www.crnusa.org/sites/default/files/pdfs/CRN-WhoTakesDietarySupplements-2016data.pdf>

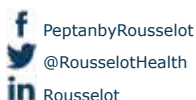
*This product is not intended to diagnose, treat, cure or prevent disease.*  
For further references and more information on the science behind Peptan, please visit [rousselot.com/health](http://rousselot.com/health)

## Rousselot Headquarters

### Rousselot B.V.

Kanaaldijk Noord 20  
5691 NM Son The Netherlands

+31 499 364 100  
[collagen@rousselot.com](mailto:collagen@rousselot.com)



[rousselot.com/health](http://rousselot.com/health)

**Rousselot**  
Health & Nutrition